

Incheon Smart Tourism Mobile App

인천이지

Incheon easy



This book was printed with eco-friendly methods.

- 1 Tour-schedule recommendations tailored to your taste
「AI Recommendations」
- 2 Getting to know the 19th century Jemulpo Port through AR&VR
「AR-VR」 Time Travel
- 3 Booking, payment, and coupons at your fingertips
「I-PASS Payment」

Meet your smart-tour service provider:
the Incheon-easy app.



Travel Easier, Simpler, and Smarter in Incheon

What should I do?	How should I get there?	Should I wait?	Should I bring wallet?	Should I carry bags?	How can I get discounts?	How can I get tax refund?	Is there a special Tour?	Do I need a tour guide?
AI Recommendations	Smart Mobility	Smart Order	Mobile Payment	Luggage Service	Mobile Coupons	Real-Time Tax Refunds	AR-VR Time Travel	Audio Guide
Personalized tour recommendations	Book transport of your choice	Queue in advance and order on the app	Pay through the app: No need for a wallet	Keep your luggage at a nearby shop	Use Coupon alerts via app.	Tax refunds upon payment: No need to go to the airport for a tax refund	19 th -century Jemulpo Port right in front of you	Enjoy tours without a hired guide

Website



www.ito.or.kr

SNS



Facebook
Incheon Tourism



Instagram
Incheon Tourism
(@discoverincheon.en)



Youtube
Incheon Travel Market



Available 24/7

*08:00-19:00 for Russian, Vietnamese, Thai, Malay, and Indonesian

1330 is a voice call and real-time text chat service that provides local and international tourists with diverse information for travels in Korea.

Phone In Korea : 1330 From overseas : +82-2-1330

Text chat scan the QR code and add as a friend.

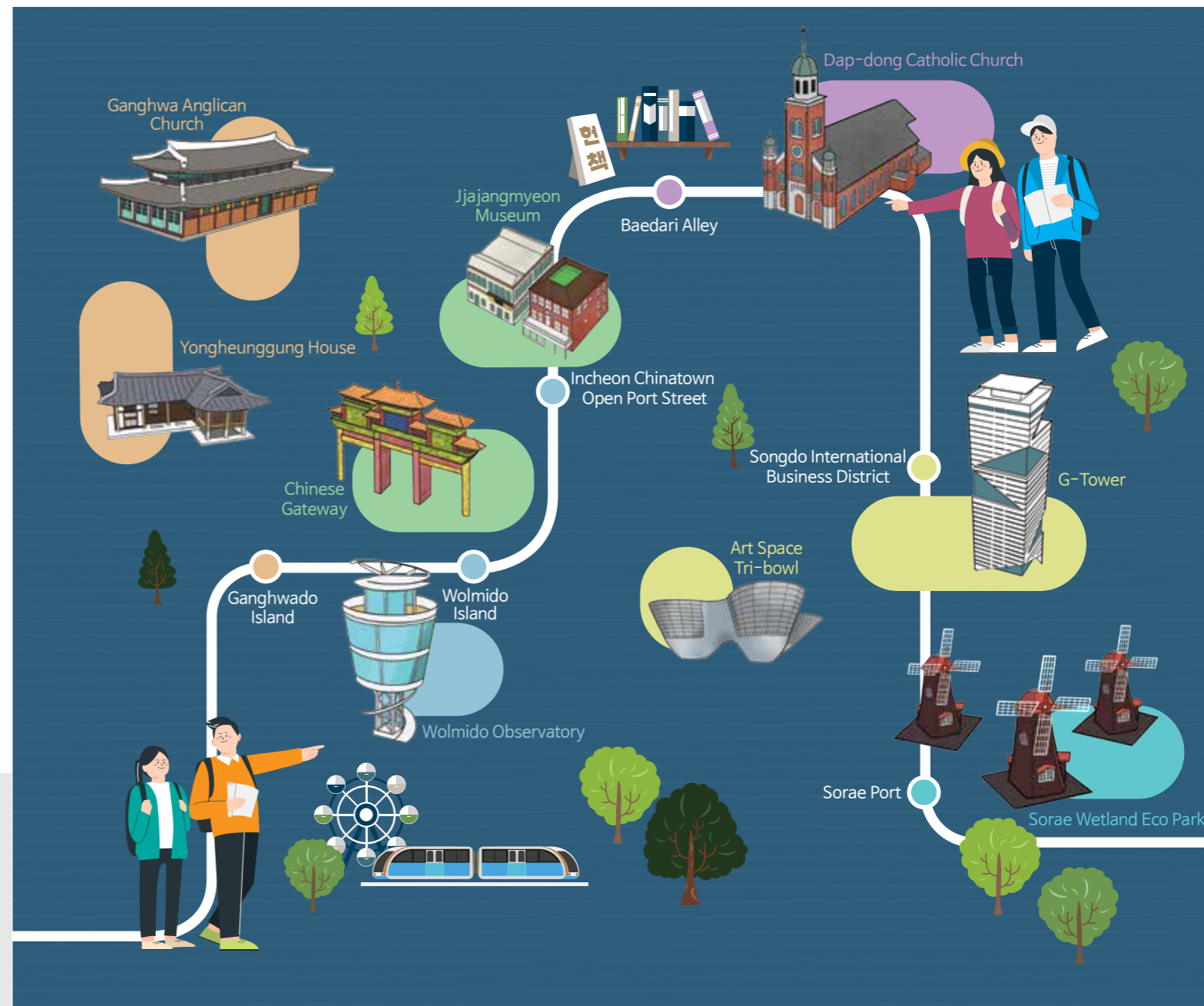


Full of Great Tastes and Stories

WALKING TOUR of INCHEON



EXPERIENCE
EVERY
CORNER OF
KOREA ON FOOT



Full of Great Tastes and Stories

INCHEON Noodle Road

Incheon is full of "Firsts in Korea." Incheon is Korea's first railway city. It is also home to Korea's first hotel, first coffee shop, and first post office. It's the same with food. Incheon, the birthplace of jjajangmyeon (black bean noodles), jjolmyeon (spicy springy noodles) and dak gangjeong (chicken bites). Let's walk through the alleys of Incheon by following the treasure-like stories and traces of this city that opened the door to modern culture in Korea.

- 1 Open Port Area and Chinatown — 4p
- 2 Baedari Used Bookstore Street — 6p
- 3 Wolmido Island — 8p
- 4 Songdo International Business District — 10p
- 5 Sorae Port — 12p
- 6 Ganghwa Story Walk — 14p

Incheon Smart Tourism
Mobile App

인천@지
Incheon easy



Please note that the information on this map is current as of the end of March 2021.

Updated information is available on the Durunubi website (www.durunubi.kr) and app. Amenities, such as cafes and restaurants, were selected by the editing committee based on the preference of tourists through a survey on reviews and hash tags.



Certified by the Korea Tourism Organization
Korea Quality is a certified designation system to help tourists select high quality facilities and services. (www.qualkorea.com)



The Ministry of Culture, Sports and Tourism and the Korea Tourism Organization select and promote the 100 leading tourist spots of Korea once every two years in order to activate tourism in Korea.



These are new tourist destinations with growth potential and value that are fostered through cooperation by the Korea Tourism Organization and local governments.

Chinatown-Open Port Area-Sinpo Market

Open Port Area & Chinatown

Elapsed Time 45m Distance 2.6km

A city of "Firsts in Korea" where the modernization of Korea began

First train whistle to sound in Korea. Home to Korea's first hotel and coffee shop. Birthplace of jjajangmyeon and jjolmyeon. Where citizens first enjoyed watching football and baseball games. As such, the open port area and the area around Chinatown have a history of courage and venture to open the door to modern culture in Korea.

How to Enjoy the Open Port Area and Chinatown

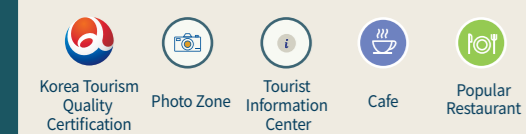
Museum Tour on Multi-ticket
There are five museums in and around the open port area and Chinatown (Incheon Open Port Museum, Modern Architecture Museum, Jung-gu Life History Museum, Jjajangmyeon Museum, Korean-Chinese Cultural Center). With the multi-ticket, you can tour around the museums at a discounted price. Tickets can be purchased at any of the five museums. (Adults: KRW 3,400/Children: Free admission)

Does white jjajangmyeon exist? Yes or no?
Yes it does, and you can find it in Chinatown. The color of Baengnyeong Jjajang served at a restaurant in Chinatown is white. Made with traditional Chinese white soybean paste plus such ingredients as meat and onions, this 'white' jjajangmyeon tastes lighter than ordinary jjajangmyeon.

Street Food
You can find street food stalls all across Chinatown. These stalls sell large sugar-filled bread, red bean cakes, and sugar-coated fruit. Street food is one of many charms Chinatown has to offer.

Transportation

National Railway Line 1, Incheon Station (Exit 1)
Suin Line, Incheon Station (Exit 3)



1. Incheon Station

The birthplace of KORAIL. The first train operated from Incheon to Noryangjin on September 9, 1899.



2. Chinatown Street

This is the birthplace of jjajangmyeon and the most famous Chinese food street in Korea.



3. Border Stairs Between Chinese and Japanese Settlements

These stairs demarcates the settlements of the Japanese (1883) and the Chinese (1884).



4-1. Daebul Hotel Exhibition Hall

Daebul Hotel is Korea's first Western style hotel. Tea cups, tableware, beds, etc. used in the old days are on display.

4-2. Jung-gu Life History Museum

A street of Jung-gu, Incheon lined with a barber shop, tea room, theater, etc. from the old days has been recreated.

5. Korean-Chinese Cultural Center

Cultural artifacts of sister cities in China are on display. Visitors can also enjoy experiencing Chinese traditional costumes and performances.



6. Incheon Art Platform

This is a cultural space created by remodeling a 100-year-old warehouse. It has been used as a filming site for numerous movies and K-dramas, including Guardian: The Lonely and Great God and My Love from the Star.

7. Incheon Open Port Museum

The former Japanese First Bank, this renovated museum holds modern artifacts introduced into Korea at the time of the port opening.

8. Street of Japanese Houses

Resembling the traditional Japanese city street where the upper class lived during the period of Japanese occupation.

9. Songwol-dong Fairy Tale Village

Mural village where characters from fairy tales are painted on the walls.

10. Trick Art Story

This is a space for experiencing trick art created under the theme of fairy tales. A range of displays and experience-type programs developed using AR are offered.

11. Jayu Park

Built in 1988, this is Korea's first Western style park. The Statue of General MacArthur, the Korea-U.S. Centennial Monument, and the oldest sycamore tree in Korea are located in this park.

12. Jemulpo Club

This was a spot for the social gathering of foreigners from the U.S., Germany, Russia, etc. at the time of the port opening. It is a story-telling museum that screens videos about the port opening and modern history.



Hwapyeong-dong Naengmyeon Street
Michuhol Culture Hall
Jung-gu Community Health Center
Dongjincheon-dong Community Service Center
Incheon Metropolitan Office of Education Culture Center for Students
Incheon Naedong Anglican Church
Choyeon Museum
Sunkwang Museum
Sinpodong Community Service Center
Simpoo Station 400m

SNS POPULAR CAFES

- 1. Cafe Oz: Dessert cafe serving patented jjajang bingsu, which is shaved ice with toppings that is presented in the shape of jjajangmyeon.
- 2. Tart King: Cafe serving Macao-style egg tarts. Takeout service.
- 3. Cafe Akira: Cafe with a garden and rooftop dining area, famous for organic desserts and special teas.
- 4. C27 Incheon Chinatown: Cafe offering different atmospheres on each floor that is famous for cheese balls and cakes.
- 5. Hongdubyeong: The only restaurant in Korea serving Chinese red bean-filled buns that also appeared on the TV show, A Master of Living.
- 6. Pot_R: Cafe established in a colonial Japanese house designated as a cultural property. Popular menu items include shaved ice with sweetened red beans and Nagasaki-style sponge cake.
- 7. Gwandong Origin: Gallery cafe established in a remodeled Japanese style house. Features a Japanese-style room with Tatami floor and a garden.
- 8. Sunny Club: Beautiful gallery cafe where the K-drama, "When the Devil Calls Your Name," was filmed.
- 9. Bottomline: "Long-lasting Small Business," cafe offering live jazz performances established in a modern building with over a 100-year history.
- 10. Heureun Mul: "Long-lasting Small Business," retro-style cafe playing LPs that was opened in 1989.
- 11. Little Oven: Cafe in Sinpo-dong famous for delicious macarons.
- 12. Incheon YeogwanXRuby Salon: Retro-style cafe established in a remodeled inn.
- 13. wknd Lounge: Cafe with a white-toned interior and cute decorative items that is famous as a photo spot.
- 14. SOHO63: Brunch cafe established in a remodeled house. Gallery is also in operation.

SNS POPULAR RESTAURANTS

- 15. Yeongyeong: Restaurant in Chinatown famous for white-colored jjajangmyeon and Beijing Duck.
- 16. Mandabok: Chinese restaurant famous for white-colored Baengnyeong Jjajang.
- 17. Sinsung Banjeom: Restaurant run by a descendant of Wu Hui-gwang, the creator of jjajangmyeon.
- 18. Gonghwachun: The first Chinese restaurant brand in Korea.
- 19. Lucky China: Restaurant serving Sheng Jian Bao (steamed and pan-fried buns).
- 20. Junghwaru: Traditional restaurant famous for yuni jjajang (noodles in chunky black bean sauce) and sameon jampong (spicy seafood noodle soup).
- 21. Onsen Tendong: Restaurant serving rice with tempura that became popular after its exposure in the TV show, Baek Jong-won's Alley Restaurant.
- 22. Sinpo Uri Mandu Head Store: Dumpling restaurant with a 50-year history that created the spicy jjolmyeon (springy noodles) dish.
- 23. Sinpo Sundae Sinpo Market Head Store: "Long-lasting Small Business," 43-year-old restaurant famous for sundae (blood sausage) made by a second-generation sundae master.
- 24. Wonjo Sinpo Dak Gangjeong: Restaurant in Sinpo Market that first served the dak gangjeong (glazed fried chicken bites) dish.
- 25. Gyeongin Myeonok: Pyeongyang-style cold buckwheat noodle restaurant with a 75-year history, which, according to history provided a delivery service all the way to Seoul.
- 26. Donbieocheonga: Restaurant with a 46-year history specializing in grilled marinated ribs. Long-lasting Small Business.

Dongincheon Station-Baedari Alleys-Dowon Station

Baedari Used Bookstore Street

Elapsed Time 50m Distance 3.0km

A street of "Newtro (new + retro)" culture reborn on top of its 100-year history

Located over a hill from the open port area, which is a location through which Western civilization was introduced into Korea, Dongincheon is where Korean culture was protected against aggression by foreign powers. This is also where the women's labor movement under Japanese occupation, the March First Independence Movement, and the April 19 Revolution in the Incheon area began. In addition, Baedari is one of Korea's most famous book culture streets, and Sudoguksan arouse nostalgia about the modern period.

How to Enjoy Baedari Used Bookstore Street and Dongincheon Station

✓ Trip to Food Streets

The numerous food streets near Dongincheon Station include Sundae (blood sausage) Alley, Sesutdaeya Naengmyeon (cold buckwheat noodles served in a large bowl) Street, Samchi (grilled seerfish) Alley, and Yongdong Kalguksu (noodle soup) Alley.

✓ Baedari Flea Market

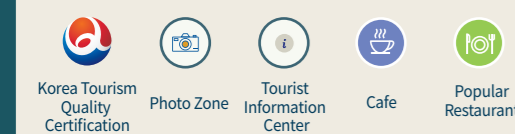
A flea market opens every Sunday from 11 in the morning to 5 in the afternoon under the Baedari Railroad Bridge in Dongincheon. This market specializes in antiques and private collections of vendors. Go on a treasure hunt and you might find valuable items at cheap prices. * The schedule may be subject to change under certain circumstances.

✓ 100-Year-old Theater and Cafe Street

There are two old theaters in Incheon. One is Mirim Theater with a history of 60 years, and the other is Aegwan Theater with a history of over 100 years. Ssarijae Hill on which Aegwan Theater is located has recently risen to fame as a celebrated cafe street in Incheon. This street is lined up with exotic cafes and restaurants in old buildings with new stores popping up one after another.

Transportation

National Railway Line 1, Dowon Station (Exit 3)
Dongincheon Station (Exit 4)



13. Mirim Theater
Since it first screened silent movies under a canopy in 1957, this local theater has been keeping its place for over 60 years.

12. Baedari Traditional Craft Street
This is Incheon's representative craft street. Here, you can enjoy the exhibitions of crafts and also buy and experience various craft items.

11. Sudoguksan Museum of Housing & Living
This folk culture museum was established on the site of a storage pond. The old sceneries of Songnim-dong and Songhyeon-dong, have been recreated. This museum offers a glimpse into the lives of people in the 1960s and 1970s.

10. Baedari Match Village Museum
This museum introduces the history of Korea's match industry by focusing on the area where matches were first made in Korea in 1917.

8. Amusement Media Space TAM
This is a place where you can experience historical and cultural contents of Incheon in 3D. The time travel program into the past is popular.

7. Changyeong Elementary School
As the first public school of Incheon, this is where the March First Independence Movement was started in Incheon. Ryu Hyun-jin, a famous baseball player, graduated from this school.

6. Yeonghwa Academy
Built in 1911, this is the first Western style elementary school opened in Korea.

9. Baedari Used Book Store Street
This is the filming site of Guardian: The Lonely and Great God. Together with Bosu-dong in Busan, it is the most famous used book store street in Korea.

14. Grilled Seerfish Street
This street is lined with restaurants that first served menu items using seerfish, which was a cheap ingredient in the past.

15. Yongdong Large Well
This is a well built on a natural pond during the latter Joseon period. Each year, the Yong-dong Large Well Festival is held.

16. Naeri Methodist Church (Wesley's Chapel)
This is Korea's first Methodist church and the first Western style chapel in Incheon. It is also home to the first ever performance of the full-length version of Handel's Messiah.

17. Aegwan Theater
This movie theater, which is over 100 years old, is the first of its kind established by a Korean person.

18. Dap-dong Catholic Church
This is the second Western style Catholic church built in Korea. The extended Gothic-style arch stained glass windows create a magnificent sight.

5. Porridge Alley
An alley of restaurants that served porridge, made by boiling down food from the U.S. Army base after the Korean War when food was scarce.

4. Changyeong Railroad Euollim Gallery
Established over an area from Dowon Station to Baedari, this gallery is mainly used to display the works of local artists and schools.

3. Site of Female Missionaries' Boarding House
This boarding house built in the late 19th century housed female missionaries sent from the U.S. to Korea by the Methodist Church. It displays a unique architectural style combining Korea's traditional windows and bars with a Western style exterior.

2. Old Mission Center (Site of Allen Villa)
This is the site of a villa occupied by U.S. diplomat and missionary Horace Newton Allen during the 19th century. It is also where the movies, "Secretly, Greatly" and "Voice" were filmed.

1. Ugangno Culture Village
This is the filming site for numerous movies and K-dramas, including Voice, Mrs. Cop, and The Man from Nowhere.



SNS POPULAR CAFES

- 1. Cake Lovers**
Cafe serving cakes and coffee prepared by a professional pastry chef and barista
- 2. Maswi**
Hanok book cafe and picture book store with wide windows and a tiled roof
- 3. Barbe de Myo**
Gallery cafe decorated with antique items Famous for pies
- 4. Gaejangdang**
Dessert cafe famous for house-made macarons, tarts, and scones with butter and sweet red bean paste
- 5. IK Lighthouse**
Exotic cafe with light bulb decorations established in a building that was previously used as a maternity hospital K-drama filming site
- 6. 6's_Seo**
Cafe famous for cold brew coffee, milk tea, and house-made desserts
- 7. Cafe Icing**
Vintage-style cafe in Gaejangno that is famous for house-made desserts
- 8. Gaejangno 91**
Brunch cafe offering different atmospheres from vintage to antique styling on each floor
- 9. Ssarijae**
Cafe established in a building from the port opening era where LPs and books from the period are on display Specializes in Moka pot coffee
- 10. Brown Hands Gaejangno**
Retro-style cafe established in a building previously used as a hospital Pet-friendly

SNS POPULAR RESTAURANTS

- 11. Gohyang Naengmyeon**
First restaurant opened on Sesutdaeya Naengmyeon Street that serves grilled rib patties as a side dish for naengmyeon (cold buckwheat noodles)
- 12. Inhwaijip**
Restaurant that first started serving grilled seerfish with a 40-year history, famous for its grilled seerfish, omelet roll, and soft tofu stew set menu
- 13. England Wang Donkkaseu**
Retro-style pork cutlet restaurant that appeared on the TV shows, Reply 1988 and Baek Jong-won's Top 3 Chef Kings
- 14. Samgangok**
"Long-lasting Small Business," seolleongtang (ox bone soup) and haejangguk (hangover soup) restaurant with a 74-year history
- 15. Gaejangno Tongdak**
Old-fashioned rotisserie chicken restaurant with an outdoor dining area
- 16. Matilda Gaejangno**
Pasta restaurant run by a chef who studied at a culinary school in Italy
- 17. Gaejang Noodle**
Retro-style noodle restaurant famous for noodles in hot broth and batter-fried beef over rice
- 18. Hyeondae Multeombeong**
Restaurant opened in 1984 that specializes in spicy stewed monkfish prepared using only fresh monkfish caught in Korea

Incheon Station-Sea Train-Wolmido Island

Wolmido Island

Elapsed Time 1h Distance 3.2km

An island where youth culture and the history of the port opening coexist

Wolmido Island was an outpost of the imperial powers during the port opening period. This is the port where a French battleship anchored for the first time. Jemulpo Naval Battle, the prelude to the Russo - Japanese War, also took place in these coastal waters. Establishment of Korea's first resort facility during the Japanese colonial period. This is also the site of the Incheon Landing Operation that led to the victory in the Korean War.

How to Enjoy Wolmido Island

✓ The Sea of Taste, Attraction and Fun

Wolmi Culture Street is lined with numerous cafes and restaurants serving sliced raw fish, against the backdrop of the sea, the sunset, an amusement park, excursion boats, and a musical fountain. The ride attractions make Wolmido Island a world of thrilling excitement and fun.

✓ Wolmisan Mountain and Wolmi Park

Wolmisan Mountain (108m above sea level) has a beautiful and rich forest. The 2.3km long Wolmisan Trail is a popular dating spot. A convenient way to get to the top of the mountain is to take Mulbeom Car at the entrance of Wolmi Park. From the observatory at the top of the mountain spreads a magnificent view of the Incheon Inner Port and Incheon Bridge.

✓ Wolmi Sea Train

Sea Train is the easiest way to enjoy the beautiful scenery of Wolmido Island. The train circling the island at a height of a three-story building departs from Wolmibada Station, located next to Incheon Station. At dusk, you can enjoy splendid views of the sunset from the train. You can board and get off the train at three stations on Wolmido Island.

* Usage Fee : (Adults) KWN8,000 / (Teenagers) KWN6,000 / (Children) KWN5,000
Trains can be re-boarded up to 2 on the same day

Transportation

National Railway Line 1, Incheon Station (Exit 1)
Suin Line, Incheon Station (Exit 3)

- Korea Tourism Quality Certification
- Photo Zone
- Tourist Information Center
- Cafe
- Popular Restaurant

2. Wolmido Excursion Boat

Course A
Through Yeongjong Grand Bridge and Ara Waterway Floodgate, and back to Wolmido Island.

Course B
Through the coastal waters of Yeongjongdo Island and Incheon Bridge, and back to Wolmido Island.



3. Seawater Foot Bath

Bedrock water pumped up from 110m below sea level.
* Open from May to October



1. Incheon Landing Operation Memorial Stone

This is the historic location of the Incheon Landing Operation. It led to the victory in the Korean War.



11. Wolmi Culture Center

This is a museum and an experience center where you can learn about the history and culture of Wolmido and Incheon. Try your hand in the hanbok, kimchi, or traditional sauce making program.



10. Wolmi Park

After being used as an army post for some 50 years, the area has been transformed into a park in 2001. Inside the park, you will find a traditional garden, an artificial pond, and a culture center.



4. Wolmido Lighthouse Trail

Walking on this trail, you can enjoy the beautiful glow of the setting sun and unobstructed views of the sea.



5. The Museum of Korea Emigration History

This is the only museum in Korea dealing with the country's history of emigration. Established in 2008 with funds raised by citizens of Incheon and overseas Koreans in celebration of the 100th year of Korean emigration to the U.S.

6. Floodgate Information Center

Here, you will find Korea's first floodgate-type dock that is also the largest in Asia. From the observatory on the fifth floor, you can enjoy the view of large ships entering and leaving the port.



7. Eoeulmi Center

Eoeulmi is where the name of Wolmido Island came from. Created by remodeling the boarding house for floodgate workers, this is a thematic exhibition hall and a rest area that shows the history and culture of Wolmido Island.



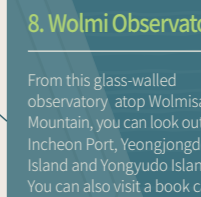
9. Korean Traditional Garden

Recreations of gardens from the Joseon Dynasty, such as those of the royal palace, hermitage gardens, and gardens of private houses.



8. Wolmi Observatory

From this glass-walled observatory atop Wolmisan Mountain, you can look out to Incheon Port, Yeongjongdo Island and Yongyudo Island. You can also visit a book cafe and a space where you can leave messages on wooden blocks.



SNS POPULAR CAFES

- Me Too Coffee**
Cafe specializing in brewed coffee that opened in 1991
- Sea & Sunset & Love**
Sea-view cafe with a 30-year history. Serves wine and coffee
- Hu.Kko Macaron**
Specializes in handmade macarons and meringue cookies. New macarons are available every week
- Verve**
Retro-style jazz cafe where you can enjoy watching the sunset and the sound of rolling waves
- Cafe MAI YuLe**
Cafe resembling a select shop in Bangkok that opens only on weekends, serves Thai-style drinks and desserts

6. Dalbit Maru Cafe

Cafe located in Wolmisan Mountain Observatory where senior citizens work as staff members

SNS POPULAR RESTAURANTS

- Wolmido Daewang Restaurant**
specializing in grilled clams and kalguksu (noodle soup)
Famous for all-you-can-eat grilled clams
- Busan Jagalchi Hoe Jogae Gui**
Grilled clam restaurant that appeared in many TV shows with the famous "Nine-tier Emperor's Steamed Seafood"
- Gunsan Gwangju Hoetjip**
Restaurant that appeared on the TV show, The Essence of Success, by representing Wolmido Island
- Dalbit Jogae**
Grilled clam restaurant offering magnificent views from the rooftop and second floor
- Bogildo Hoetjip**
Sliced raw fish restaurant offering a beautiful view of the sea and lighthouse
- Meokgoboja Honam Hoetjip**
Restaurant famous for sliced raw fish and freshly cooked side dishes

Central Park - Triple Street Songdo International Business District

Elapsed Time 1h30m Distance 4.5km

World-famous urban park and shopping town K-drama filming site

With its modern and pleasant urban environment, Songdo International Business District is one of the popular K-drama filming sites. Many recently popular shows, such as Crash Landing on You, Hotel Del Luna, and Guardian: The Lonely and Great God, have been filmed here. It is recommended to plan your tour course centering on the filming sites or through the urban park and shopping mall.

How to Enjoy Songdo International Business District

✓ K-Drama Filming Sites

G-tower Observatory → Tri-bowl → Songdo Central Park → Gyeongwonjae Ambassador Incheon → Tomorrow City → Oakwood Premier Incheon (Panoramic 65) → Michuhol Park → Triple Street

✓ Water Sports at Songdo Central Park

At Songdo Central Park, there is a 1.8km canal created by pumping up seawater. In the canal that runs across the park, you can enjoy a number of water sports. Canoes, kayaks and family boats are available for rental at the East Boat House. The West Boat House on the opposite side of the park provides a water taxi service.

✓ K-FOOD in Songdo International Business District

- Grilled Ribs at Hanok Village (180, Techno Park-ro, Yeonsu-gu)
Songdo Hanok Village next to Gyeongwonjae Ambassador Incheon is the place to be if you crave sweet and spicy ribs, one of Korea's most famous royal cuisines.
- Songdo Food Street (81, Convensia-daero, Yeonsu-gu)
Songdo's popular restaurants recommended by locals are situated along a food street in Dream City.
- Epicurean Tour of the World on Triple Street (33-3, Songdogwahak-ro 16beongil, Yeonsu-gu)
Visit Triple Street if you want to enjoy not only Korean cuisine, but also exotic dishes and desserts from around the world.

Transportation

Incheon Subway Line 1, Central Park Station (Exit 2, Exit 3)

- Korea Tourism Quality Certification
- Photo Zone
- Tourist Information Center
- Cafe
- Popular Restaurant



1. NC Cube Canal Walk

In this premium outlet, the K-drama, A Korean Odyssey, was filmed. Cozy cafes and various stores allow visitors to enjoy delicious food and cultural performances in addition to shopping.

2. G-Tower Observatory

This is the IFEZ Information Center observatory located on the 33rd floor of G-Tower. Overlooking Songdo, this is the filming site for the K-drama, Descendants of the Sun.

3. Art Center Incheon

Designed with inspiration from the hands of a maestro, this cultural space is used as a venue for musicals and classical music performances.

4. Tri-bowl

As a symbol of the IFEZ, this cultural space provides a magnificent night view of the city surrounded with colorful lighting. Each of the three "bowls" signifies the sky, ocean, and earth.



5. Incheon Urban History Museum

This museum introduces the history and modernization of Incheon through various exhibits, models, educational and event-type programs.



6. Hanok Village (Gyeongwonjae Ambassador Incheon)

This is a new-concept hanok village consisting of traditional houses and modern facilities. In addition to the hanok hotel and restaurants, a cultural center and a souvenir shop are located. This is the filming site for K-dramas, Guardian: The Lonely and Great God and Crash Landing on You.



7. Michuhol Park

This park was created under the theme of Korea's traditional landscape. You will find pavilions, streams, and an ecological pond with a bridge. This is the filming site for the K-drama, Hotel Del Luna.



8. Songdo Central Park

Set around a lake, this park is a landmark of Songdo. In the lake, you can enjoy boating and canoeing amid high-rise buildings. This is also the filming site for K-dramas, Guardian: The Lonely and Great God and A Korean Odyssey.

9. Panoramic 65

Situated at the observatory on the 65th floor, this is a bar and restaurant located at the highest point in Korea. This is the filming site for K-dramas, Descendants of the Sun, A Korean Odyssey, and Beauty Inside.

10. Songdo Convensia

Incheon's representative convention center hosting international conferences and exhibitions.

11. Sunrise Park

This park offers many things to see and enjoy, and a rest area. Sunrise Library located inside the park is the first of its kind in Korea to have the smart book stand system.



12. Triple Street

This is a mega shopping mall that offers a variety of experience-type facilities. This is the filming site for K-dramas, Itaewon Class, Something in the Rain, A Korean Odyssey, and It's Okay to Not be Okay.



SNS POPULAR CAFES

- | | | | | |
|---|--|---|---|---|
| 1 Ginosko
Famous for delicious desserts
Heavy White, a signature drink, is popular | 2 Cafe Comma
Large book cafe where you can enjoy reading books over coffee and bread. IBS Tower 1F | 3 Celebre
Vintage-style cafe famous for delicious rice cake and Dutch coffee | 4 Coffee Fiel Songdo
Cafe serving hand drip coffee using specialty beans | 5 An's Bakery
Bakery run by a master pastry chef
Serves daily baked bread and coffee |
| 6 Dolphin Coffee Roasters
Roastery cafe serving black sesame cream coffee | 7 New York Bagel Songdo
Authentic New York style bagels with cream cheese | 8 GRIDA DESSERT
Famous dessert cafe
Specializes in sweet cakes and espresso coffee | 9 Daily Oasis Songdo Central Park
Photo cafe famous for beverages and ice cream topped with animal-shaped cookies | 10 ZenZen Honestar
Popular brunch restaurant
Famous for souffle pancake |

SNS POPULAR RESTAURANTS

- | | | |
|---|--|---|
| 11 Impasto
Restaurant serving pan-fried gnocchi and fresh noodle pasta that appeared on the TV show, A Master of Living | 12 Baekhap Kalguksu Head Store
Kalguksu (noodle soup) restaurant famous for fresh whole clams in noodle soup | 13 Sun Deli
Restaurant and food court with a great atmosphere located on the second floor of a boat house |
| 14 Songjujip Head Store
Famous for spicy stir-fried webfoot octopus marinated with medicinal herbs and aged short loin | 15 Songdo Souvlakia
Exotic restaurant specializing in Greek and Italian cuisines | 16 Addio a Napoli Pizzeria
Neapolitan pizza and pasta restaurant famous for oak wood-fired pizzas |



Soraepogu Station - Soraie Wetland Eco Park

Sorae Port

Elapsed Time 1h40m Distance 5.0km

The nostalgia of a narrow-gauge railway and the bustling scenes of a fish market

Sorae Port became known to the outside world when a salt farm was built in 1933 and a narrow-gauge railway was established between Suwon and Incheon to transport the salt. Following the Korean War, the North Korean refugees who settled in the area started making and selling salted shrimp, naturally leading to the formation of a fish market. In the 1970s, Korea's largest seasonal shrimp market was established and, as a result, Sorae Port became famous as one of the major fish markets in the capital region.

How to Enjoy Sorae Port

- Sorae Wetland Eco Park

This eco park was created by transforming the wetland and salt farm into a habitat for various organisms including migratory birds. The salt farm facilities show visitors the process of how natural evaporation salt is made. This is also a great photo spot where you can take beautiful pictures.
- Fish Markets

Sorae is home to Sorae Port Fish Market and a traditional fish market. Sorae Port Fish Market is located between Soraepogu Station and Sorae History Museum. The traditional fish market set alongside the port was destroyed in a great fire in March 2017. The market reopened with modern facilities in January 2021.
- Soraegil Bicycle Path

This bicycle path extends 4.4km. Selected as one of the "100 Beautiful Roads of Korea" by the Ministry of Land, Infrastructure and Transport, Soraegil Bicycle Path is a safe and beautiful road surrounded by history and nature.

Transportation

Suin Line, Soraepogu Station (Exit 2)

Korea Tourism Quality Certification

Photo Zone

Tourist Information Center

Cafe

Popular Restaurant

8. Sorae Wetland Eco Park Exhibition Hall

This former salt storage remodeled into exhibition hall displays photos of halophytes as well as the salt farming process and Sorae Port.

7. Sorae Gaetgol Outdoor Classroom

This educational facility provides information about the sea and wetland using videos and photos. Gaetgol Deck located right in front of the classroom is a popular photo spot.

11. Salt Farm Experience Center

From this farm, 400 kg-1,200 kg of salt is produced per day. Around 4 in the afternoon, visitors can experience salt harvesting using spades.

10. Wetland Experience Center

This is where you can explore the wetland and observe various marine organisms.

9. Sorae Wetland Seawater Foot Bath

You can enjoy a relaxing foot bath in seawater pumped up from some 150m below sea level and heated to around 40°C. * Open from 10:00 to 17:00 between March & mid-November.

6. Sorae Port

The only traditional port in the capital region actually used by fishing boats. This port and tourist site sells fish and various seafood caught on the day.

5. Haeoreum Square

In this waterside park, you will find a large crab statue, which symbolizes Sorae, and a shrimp-shaped tower that functions as an observatory.

1. Sorae History Museum

This museum shows the history and culture of Sorae under the four interesting themes of Sorae Wetland, Sorae Port, Sorae Salt Farm, and Suin Line Narrow-Gauge Railway.

2. Sorae Fish Market

Divided into Sorae Port Fish Market and a traditional fish market, this large fish market with a long history is one of Korea's most famous fish markets.

3. Jangdo Battery Site

This is a battery site completed in 1879. Of the three gun carriages, two are facing the sea and one is facing the inland area.

4. Sorae Railroad Bridge

This is a footbridge built by remodeling the railroad bridge used by narrow-gauge trains in the old days. There is a legend that a couple who crosses this bridge holding hands with each other will never be separated.



SNS POPULAR CAFES

- 1 8PERCENT COFFEE**

Glass-walled cafe offering park views where the baristas roast coffee on the premises
- 2 Nonhyeongil**

Cafe famous for house-baked cookies and aromatic coffee
- 3 Greenish**

Dessert cafe filled with green hues Pet-friendly
- 4 Etria**

Macaron and meringue cookie cafe, located in Soraegil Shopping Mall
- 5 ABBA**

Music cafe where the DJ plays LPs according to song requests by patrons
- 6 Cafe Uncle Richard**

Cafe located next to Sorae Port Overpass

SNS POPULAR RESTAURANTS

- 7 Gaeseong Sonmandu**

Famous for house-made dumplings and kimchi
- 8 Hanujeong**

Restaurant specializing in hanu beef, famous for premium ribs
- 9 Hwadongok**

Makguksu (spicy buckwheat noodles) restaurant that appeared on the TV show, A Master of Living
- 10 Tongkeun Kalguksu**

Restaurant that appeared on a TV show with its famous kalguksu (noodle soup) and spicy stewed seafood with abalones and scallops
- 11 Seocheon Susan**

Most famous sliced raw fish restaurant in Sorae Fish Market
- 12 Hwanghae Gejang Jeonmunjeom**

Famous for soy-marinated crab and spicy stir-fried crab

Old Downtown Area of Ganghwado Island - Goryeongung Palace Site

Ganghwa Story Walk

Elapsed Time 1h10m Distance 3.4km

Alleyway on Ganghwado Island where the island's history and culture breathe alive

"Alleyway with Story" selected as one of the "100 Must-visit Tourist Spots of Korea" for 2021 - 2022. This is a walking tour course through which you will find traces of Korea's modern history based on such historical sites as Goryeongung Palace Site and Ganghwa Anglican Church.

How to Enjoy the Old Downtown Area of Ganghwado Island

Ganghwa Story Tour on Electric Bicycle

Enjoy a trip into the history of Ganghwado Island on an eco-friendly electric vehicle along the Goryeongung Fortress Wall Trail. The tour starts at the parking lot of Yongheunggung Park. From here, you will visit a number of historical locations.

- Ganghwa Anglican Church
- Yongheunggung House
- Ganghwa sanseong Fortress(East Gate)
- 4 Legendary Witches filming site
- Goryeo Palace Site

Rental Fees : KRW 20,000 (40 min.)/KRW 30,000 (60 min.)/KRW 40,000 (80 min.)/KRW 50,000 (100 min.)

1 electric bicycle - For 2 adults / For Booking and Info.: +82-32-934-2628, 2638

Shopping on Ganghwado Island

In the old downtown area of Ganghwado Island, there are two traditional markets (Ganghwa Market, Jungang Market) and the Ginseng Center. Also, a fifth-day market is held near Ganghwa Market on days that end with the numbers 2 and 7 (2nd, 7th, 12th, 17th, 22nd and 27th of each month).

- * Ganghwa Market : +82-32-934-1318
- * Ganghwa Ginseng Center : +82-32-933-5001

Transportation

- From Seoul: 88 (Yeongdeongpo), 2000 (Sinchon), 3000 (Sinchon), 60-5 (Gimpo International Airport)
- From Incheon: 70 (Cheongna), 700-1 (Incheon Terminal), 800 (Incheon Terminal), 90 (Bupyeong Station)
- From Gyeonggi-do: 96 (Ilsan)

- Korea Tourism Quality Certification
- Photo Zone
- Tourist Information Center
- Cafe
- Popular Restaurant

12. Ihwa Textile Mill Street
This mural street shows the history of the textile industry on Ganghwa. Looms and the front view of a textile mill have been recreated in a relief sculpture.

13. Joyang Textile Mill
This textile mill led Ganghwa's textile industry. With the interior and exterior preserved, this old textile mill transformed retro-style café is Instagrammable.

West Gate of Ganghwasanseong Fortress
Yeonmudang Site

14. Ganghwa Central Methodist Church
Established in 1900, this church produced a number of independence and democracy activists.

5. Ganghwa Tourism Platform
This is a tourist information center that provides visitors the history and culture of Ganghwado through media and VR. It also offers free programs like Goryeo costume and photo experiences.

4. Sochang Experience Center
This exhibition and experience center was established by remodeling a hanok and a dye house built in 1938. It offers a Sochang fabric stamping experience program and weaving demonstrations.

3. House of Kim Gu (Daemyeongheon)
This is the house where the independence activist Kim Gu stayed for three months and taught local children. It is currently used as the Hanok Experience Center.

11. Oegyujanggak
This is the royal library used to store important books and articles of the Royal Family of Joseon including the Royal Protocols taken by the French army.

10. Goryeogung Palace Site
This is the site of Goryeogung Palace where the Royal Family of Goryeo stayed for 39 years in resistance against Mongolia in the mid-13th century.

9. Ganghwa Catholic Church (Jimmuyeong Martyrs' Shrine)
Built in 1700, this is a Catholic church built on the execution ground of the Catholic, a military camp installed for sea defense, and also the origin of Catholic labor pastoral service.

8. Ganghwa Anglican Church
This is Korea's first hanok-style Catholic church opened on November 15, 1900 following the first baptisms of Koreans on Ganghwado.

7. Yongheunggung House
This is where King Cheoljong, the 25th king of Joseon nicknamed "Ganghwa Doryeong (man of Ganghwa)," lived in seclusion on Ganghwado.

6. Memorial Stone for Kim Sang-yong
This memorial stone was erected in memory of Joseon's Prime Minister Kim Sang-yong who sacrificed his life for the country by igniting gunpowder at the top of Nammullu Pavilion when Ganghwasanseong Fortress fell to the enemy.

1. Procession to Ganghwa
This is a history painting that recorded the procession to Ganghwa to bring the new king, Cheoljong, who had been living as a farmer from a fallen royal clan but dramatically ascended to the throne in 1849.



SNS POPULAR CAFES

- A Tout de Sweet**
Desserts and coffee prepared by the owner who studied in France
- Ganghwa Ggagga**
Serves soft and sweet tarts made using ginseng and Ganghwa mugwort
- Cafe Jootaek**
Cafe established in a remodeled house, famous for its terrace space that overlooks Ganghwa Catholic Church
- JOECOFFEE LAB**
Small cafe serving delicious cookies and egg tarts. Specializes in takeout service
- Sol't Coffee**
Dessert cafe famous for macarons and Einspanner coffee with mugwort
- Cafe 3:15**
Hand-roasted coffee and house-made desserts
- Nammunro7**
An old textile mill-turned-cafe. Beverages served with roasted garaetteok (rice cake stick)

SNS POPULAR RESTAURANTS

- Seomun Gimbab**
Gimbap restaurant with a 30-year history that appeared on the TV show, A Master of Living
- Uriok**
Restaurant serving a delicious home meal style set menu
- Ireokjo**
Restaurant specializing in grilled pork belly and ribs and salted shrimp stew that appeared on the TV show, Encyclopedia of Useless Facts
- Ganghwa Guksu**
Noodle restaurant with a 60-year history that appeared on the TV show, Wednesday Food Talk
- Haru Jeongsik**
Restaurant serving a home meal style set menu comprising of a main dish that changes daily and four side dishes